



ABS Refractories Private Limited
Mittal Group

Contents



- ABS Refractories
- The Mittal Group
- Mining
- Raw Materials Manufacturing
- **Customers**
- A Forward Integration – ABS Refractories
- ABS Equipment & Machinery
- Laboratory Instruments & Devices
- Products
- Products for the Cement Industry
- **Customer Details**
- Strengths & Why ABS?

ABS Refractories Private Limited



- ABS Refractories was established in 1946 as Ishwar Industries at Niwar, Katni (MP) by the Bhaskar Family. It was renamed as ABS Refractories Private Limited in 1984.
- Products include Fireclay & High Alumina Bricks, Insulation Bricks, Catalyst Bed Support, Castables, Mortars, Ramming Masses, Gunning Masses.
- The Company was acquired by the Mittal Group in mid-2025.

The Mittal Group, Katni

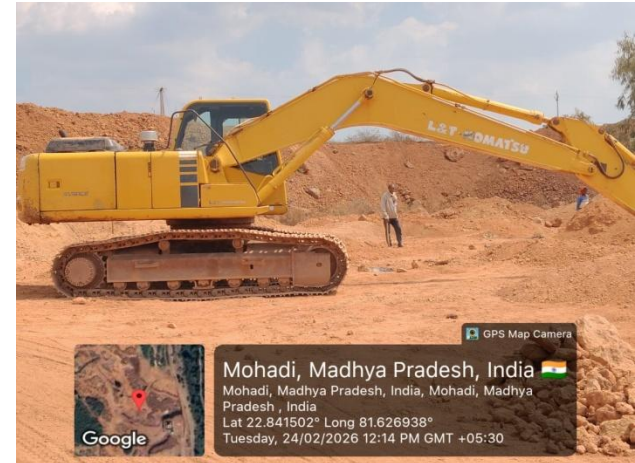


- The Mittal Group
 - Was founded in 1984
 - Is a diversified organisation of 8 major companies
 - Has a current turnover of Rs. 600 Cr
- It is engaged in Mining & Minerals Processing, Refractories, Woven Sacks, Construction Chemicals & Real Estate
- Main products/businesses include
 - Bauxites, Chamottes, China Clay, Vermiculite, Perlite & Dolomite
 - Synthetic Aggregates & Mullites
 - High Alumina Cements
 - Stucco for investment castings, Fly Ash Bricks, Silica Sand & Wall Putty
 - Refractory Bricks, Insulating Bricks, Monolithics & Masses
 - PP Bags & FIBC for Cement, Fertiliser, Sugar, etc.
 - Residential & commercial real estate development in Katni & Gurugram
- Since inception, it has endeavoured towards sustainable growth with a focus on excellence & ethics

Mining & Raw Materials



- Own mines in MP for
 - Dolomite: 17 Ha
 - Fireclay: 5 Ha
 - Bauxite: 180 Ha
- Manufacturing Calcined Bauxites, Calcined Clays & Chamottes for 30 years



Refractory Raw Materials



- The Group has 2 minerals processing plants, started in 1995
- We are a pioneer in Refractory raw materials production & one of the biggest manufacturer in India
- Katni Minerals Pvt. Ltd.
 - Calcined Bauxites & Calcined Clays
 - Sintered Mullites & Synthetic Aggregates
 - High Aluminate Cements
 - Total capacity: 90,000 tpa
- Sharda Refractories Pvt. Ltd.
 - Chamottes: 90,000 tpa
 - Wall Putty: 60,000 tpa:
 - High Alumina Bricks & Mortars: 26,500 tpa (exclusive arrangement)

Gujarat Operations



- The Group has 3 plants in Gujarat, started in 2023
- Ambaji Refractories Pvt. Ltd.
 - High Alumina Bricks: 10,800 tpa (expandable to 21,600 tpa)
- Ambaji Kaolin & Minerals Pvt. Ltd. (Minerals Division)
 - Chamottes & Bauxites (crushing, sizing & milling): 30,000 tpa
 - Perlite & Vermiculite (expansion/exfoliation): 3,000 tpa
 - Hydrous Clay (pulverising): 7,500 tpa
- Ambaji Kaolin & Minerals Pvt. Ltd. (Kaolin Division)
 - Levigated China Clay (de-magnetised): 25,000 tpa

Sharda Refractories Private Limited



Established in 1995, Sharda Refractories is engaged in **manufacturing** of Refractory Minerals, Refractories Firebricks & Mortars and Manufacturing of Wall Putty. The Plant is equipped with four vertical shaft kilns, two tunnel kilns, one rotary kiln, Ball mills, Raymond mills and grinding unit. The Production Capacity of Calcined Minerals is 90,000 tpa, High Alumina Bricks & Mortars is 26,500 Ton & Wall Putty is 60,000 tpa



Katni Minerals Private Limited



Established in 1995, KMPL is engaged in manufacturing of Refractory Minerals, Refractory Binders (Cement) in Rotary Kilns and Monolithics. The Plant is equipped with four rotary kilns, two gas producers and grinding units. Plant's production Capacity is 90,000 tpa and of Refractory Castables is 20,000 tpa

Ambaji Refractories Pvt Limited



Established 2023

- Production lines (exclusive), Capacity 10,800 TPA
 - 1 x Tunnel kiln
 - 3 x ESPs
 - 3 x Mixers
 - 1 x Automatic batching line
 - Note: expandable to 21,600 TPA
- Product range
 - High-alumina Bricks (exclusive arrangement)



Ambaji Kaolin & Minerals (Minerals Division)



- Production lines
 - Pulverising line
 - Crushing , Sizing & Milling line
 - Perlite Expander
- Product range
 - Hydrous Clay
 - Refractory Raw Materials – Crushed, Sized, Milled
 - Expanded Perlite
 - Exfoliated Vermiculite



Ambaji Kaolin & Minerals (Kaolin Division)



Plant at Nadapa, Bhuj, Established 2023

- Production lines
 - Clay Levigation line, cap. 25,000 tpa
 - High-intensity Magnetic Separation line, cap. 27,000 tpa
 - Silica line (under installation)
- Product range
 - Levigated China Clay (Kaolin)
 - High-purity China Clay (Kaolin)
 - Silica Sand



Refractory Raw Materials Customers



- Reputed Refractory Manufacturers are our Customer:
 - TRL Kroshaki Refractories Limited
 - Calderys India
 - IFGL Refractories
 - RHI Magnesita India
 - Vesuvius India
 - Carborundum Universal Limited
 - Mahakoshal Refractories
 - Refractory Shapes
 - Sharda Refractories and so on



ABS Refractories Private Limited

ABS Refractories Acquisition



- ABS Refractories was acquired by the Mittal Group on 01/06/2025
- The Mittal Group already has 2 Refractories Unit
 - Sharda Refractories, Katni
 - Ambaji Refractories, Morbi
 - Both plants have exclusive manufacturing agreement
- Experience of Refractory manufacturing is not new to the Mittal Group
- This is a forward Integration for increasing the Business Horizon



ABS Refractories Private Limited



ABS Refractories Private Limited

(A Mittal Group of Companies)



Plant Capacity

1. Dense Bricks 6500 tpa
2. Insulation Bricks 12 lakh pc/an
3. Masses 25,000 tpa

Infrastructures

S. No.	Description	Capacity Per Machine	No. of machines Installed
1	Millhouse		
A	Crusher	15 MT/ Shift	2 Nos.
B	Hammer Mill	15 MT / Shift	1 Nos.
C	Pulverizer	8 MT/ Shift	2 Nos.
D	Raymond Mill	25 MT/ Shift	1 Nos.
E	Impact Mill	24 MT/ Shift	2 Nos.
F	Automatic Batch Machine for Machine	5 MT / Shift	1 Nos.
G	Counter Current Mixer	10 MT/ Shift	1 Nos.
H	Counter Current Intensive Mixer	15 MT/ Shift	1 Nos.
I	R.T. Mixer	3 MT/ Shift	1 Nos.
J	Muller Mixer	4 MT/ Shift	1 Nos.



ABS Refractories Private Limited

ABS Refractories – Major Equipments Infrastructures (Contd.)



S. No.	Description	Capacity Per Machine	No. of machines Installed
2	Pressing/ Shaping		
A	Pug Mill	12 MT / Shift	2 Nos.
B	Friction Screw Press 150T	5 MT / Shift	4 Nos.
C	Maxiberator/ Vibratory Press	12 MT / Shift	1 Nos.
D	Hydraulic Press	2 MT / Shift	1 Nos.
E	Advance Cutting Machine	3500 Nos. / Shift	1 Nos.
F	Insulation Brick Cutting Machine	900 Nos. / Shift	1 Nos.





ABS Refractories Private Limited

ABS Refractories – Major Equipments



Infrastructures (Contd.)

S. No.	Description	Capacity Per Machine	No. of machines Installed
3	Firing		
A	Tunnel Kiln	20-25 MT/ Per Day	3 Nos.
B	Chamber kiln	5 MT / Cycle	2 Nos.
C	D.D. Kiln	250 to 275 MT/Cycle	2 Nos.

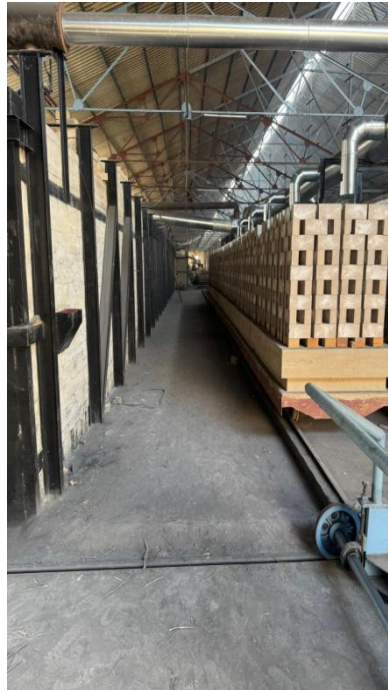


ABS Refractories Private Limited

ABS Refractories – New Investment



1. New Tunnel Kiln- 1500 °C
2. Insulation Brick Cutting Machines 3500 pc/shift



3. Additional Plan : A. Electric Screw Press 315 MT ... 2 units
B. Auto Batching Line for Bricks & Monolithics ... 2 units



ABS Refractories Private Limited

ABS Refractories – Laboratory Equipments

List of Equipments



S. No.	Name of Equipments	Capacity Per Machine	No. of machines Installed	Qty.
1	PCE	STD Cone 37(1820°C)	Assembled	2
2	RUL Furnace	Upto 1785°C	Assembled	2
3	Vibrating Machine for Cement Testing		Aimil	1
4	Vicat Apparatus	0-50 mm	Aimil	1
5	CCS Machine	0-100 Ton	Aimil	2
6	P.L.C.A.R Furnace	Upto 1450°C	Combine	3





ABS Refractories Private Limited

ABS Refractories – Laboratory Equipments

List of Equipments (Contd.)



S. No.	Name of Equipments	Capacity Per Machine	No. of machines Installed	Qty.
7	Test Sieves	5mm - 320 mm	Indian Standard	8
8	Physical Balance	10 to 200 gms.		1
9	Muffle Furnace	1150°C		3
10	Optical Pyrometer	Up to 2000°C	Toshniwal Brothers	1
11	Thermal Conductivity Apparatus	1000°C	Bien Artium, Kolkata	2
12	Reversible Thermal Expansion Test Apparatus		Bien Artium, Kolkata	1





ABS Refractories Private Limited

ABS Refractories – Product Range



1. Fireclay and High Alumina Bricks (32-90% Alumina)
2. Hot and Cold Face Insulation Bricks
3. High Temperature Insulation Bricks (IFB 23 to IFB 30 Grade)
4. Acid Resistant Bricks (Grade I & II)
5. Dense Conventional Alumina Castables
6. Insulation Castables
7. Low Cement Castables
8. Ultra Low Cement Castables
9. Refractory Bed Supports (High, Medium & Low Purity)



ABS Refractories Private Limited

ABS Refractories – Fired Shaped Products





ABS Refractories Private Limited

ABS Refractories – Customers



TATA STEEL



Tamilnadu Cements Corporation Limited



Customer List – Cement Plant

Party Name	Material Supplied	Period of Supply
M/s CEMENT CORPORATION OF INDIA LTD.	Fire Bricks (45% AL, 60% AL & 70% AL)	2009 to 2023
M/s TAMILNADU CEMENTS	Fire Bricks (70% AL) & Super Castable	2015
M/s JINDAL STEEL LIMITED	Fire Bricks (40% AL)	2026
M/s JAMMU & KASHMIR CEMENT LTD.	Fire Bricks (70% AL)	2015
M/s JAYPEE REWA PLANT, REWA	Fire Bricks (40% AL & 50% AL)	2014
M/s SATNA CEMENT	Fire Bricks (40% AL)	2020
M/s PRISM CEMENT, SATNA	Fire Bricks (50% AL & 60% AL)	2013
M/s HEIDELBERG CEMENT, DAMOH.	Fire Bricks 40% AL to 70% AL)	2010
M/s MAIHAR CEMENT, MAIHAR.	Fire Bricks 40% AL to 60% AL)	2013
M/s CENTURY CEMENT	Fire Bricks (70% AL)	2017
M/s RAMCO CEMENT	Fire Bricks (IS-8 40% AL)	2018
M/s HILL CEMENT	Fire Bricks (70% AL)	2017



ABS Refractories Private Limited

ABS Refractories – Strength



1. ABS is backed up by strong, own Refractory raw materials source.
2. Strong technical team from different Refractory industrial background
3. New tunnel kiln for 1500 °C Firing
4. Strong QC & QA system to ensure consistent process & product manufacturing.
5. Required Machinery available for Dense High Alumina Bricks. Now adding Chinese Electric Screw Press, 315 MT - 2 nos. within 2 months.
6. New Monolithic Plant- 25,000 tpa
7. In House testing facility for regular testing of final products.



ABS Refractories Private Limited



Thank You